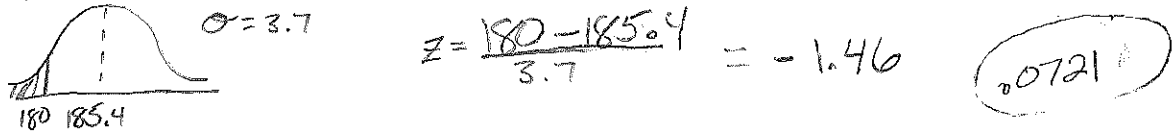


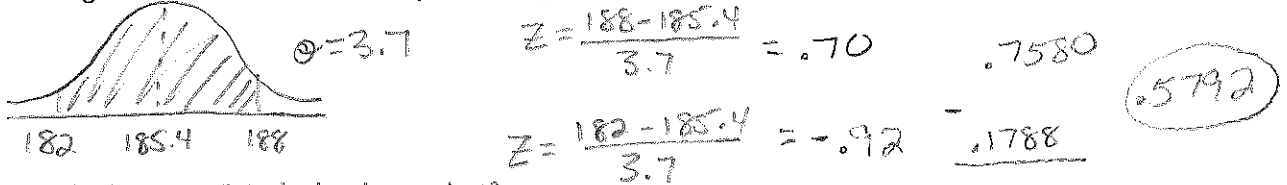
Name: _____

Students in different states go to school a different amount of days per year. Data was collected by MB magazine all across the country recording the total days per year a student went to school. The distribution was approximately Normal with $\mu = 185.4$ and $\sigma = 3.7$.

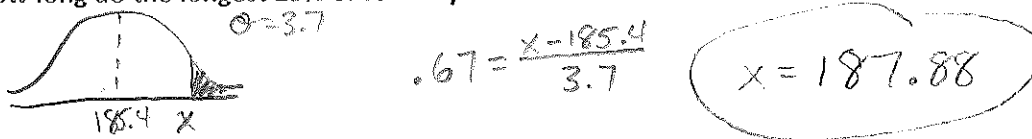
1. What percentage of schools have a school year of less than 180 days?



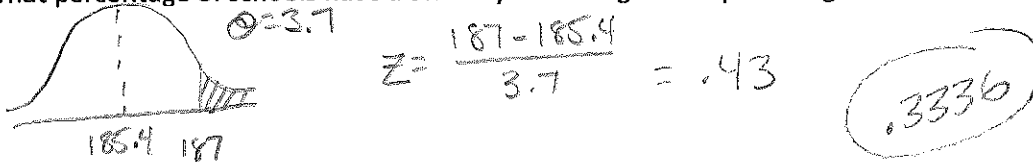
2. What percentage of schools have a school year lasting between 182 and 188 days?



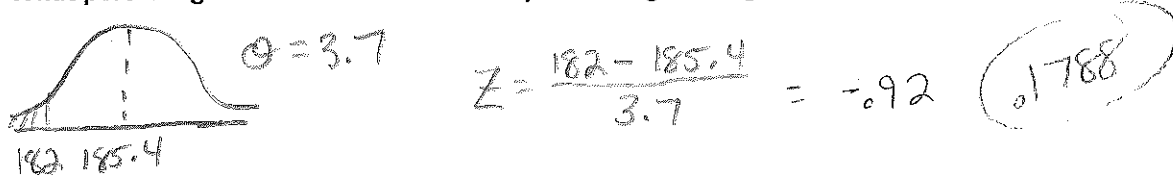
3. How long do the longest 25% of school years last?



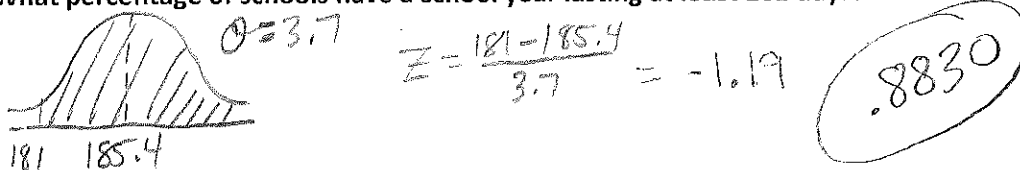
4. What percentage of schools have a school year lasting 187 days or longer?



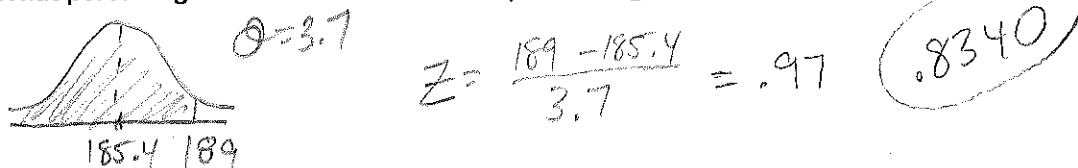
5. What percentage of schools have a school year lasting no longer than 182 days?



6. What percentage of schools have a school year lasting at least 181 days?



7. What percentage of schools have a school year lasting at most 189 days?



8. What percentage of schools have a school year lasting at least 186 days?

